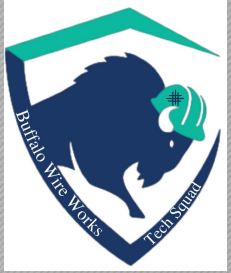


Buffalo, NY
Reno, NV
San Antonio, TX

Magnetic Liner Technology Safer and Smarter



Sept 15-18th, 2024



World Class Screening & Wear Products



Crushing | Sizing | Conveying

Presented by Lovell Bennett



BUSINESS DIVISIONS

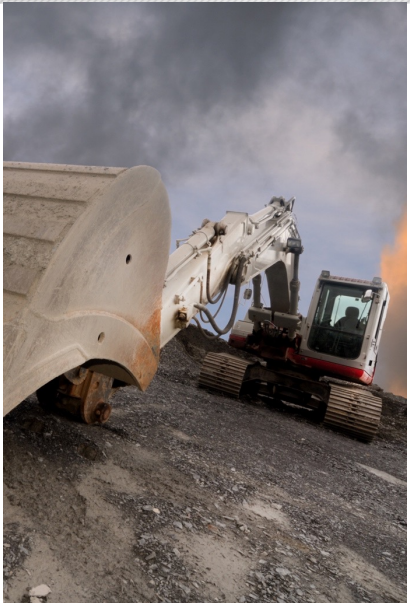
BWW Divisions



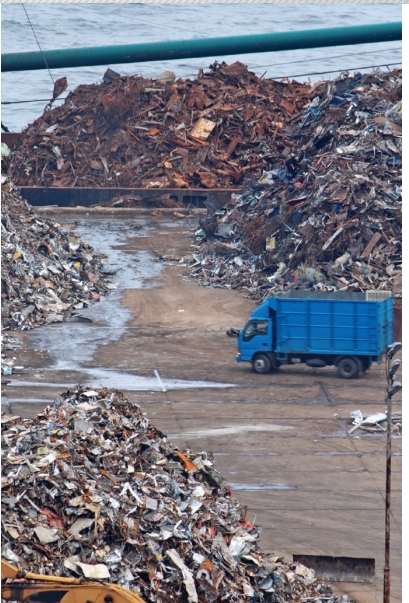
Aggregate & Construction



Mining



Quarry Supplies



SLAG / Recycling



Industrial



Architectural

Magnetic Liners

(Urethane, Rubber, UHMW)

#1 SAFETY

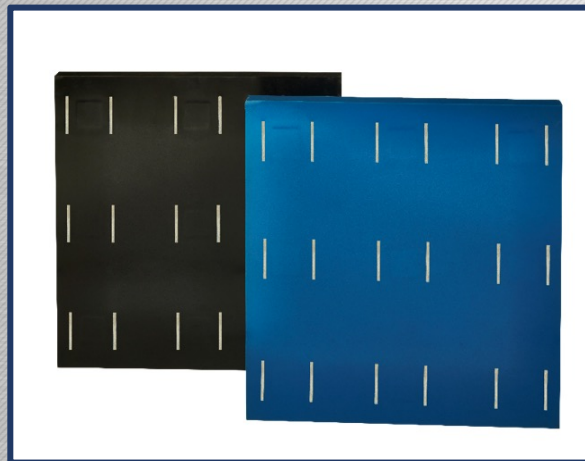


Magnetic Liners are Safer & Easier to Install than Conventional Wear Protection Methods

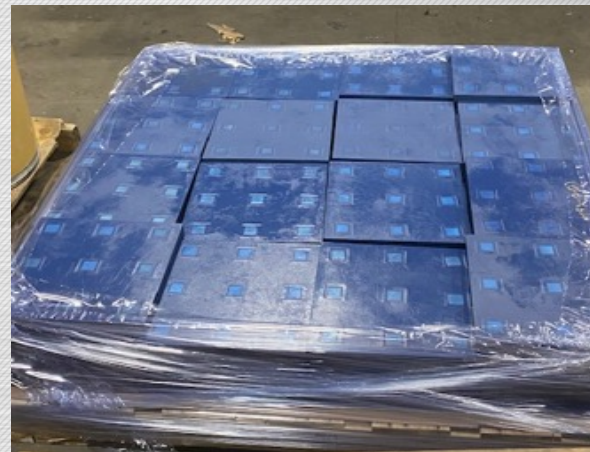
- No bolts, adhesives, welding, cutting or retro-fitting required; Best used in Ambient Temperatures (Conservatively up to 120 Degrees Fahrenheit)
- Powerful Magnets encased in segmented brackets for maximum magnetic strength
- Efficient in both static and vibratory applications
- Maintenance friendly; Quick rotation to protect higher wear areas
- SAFETY → Great for wear areas that are difficult to access (i.e. confined or tight spaces)
- Rust Proof (Unique Thin Film Urethane Design Protects Magnets for Maximum Performance)


Common Uses →

- Discharge Lips
- Side Liners
- Feed Lips
- Pan Liners
- Chute Liners
- Tube Covers



Standard 305x305mm

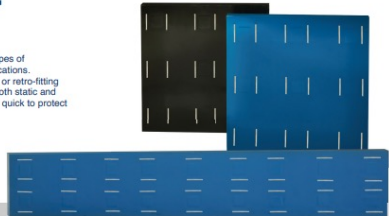




Buffalo Wire Works
Crushing | Storing | Conveying

Magnetic Liners

Buffalo Wire Works offers several types of magnetic liners for a variety of applications. No bolts, adhesives, welding cutting or retro-fitting required. Our liners are efficient in both static and vibratory applications and rotation is quick to protect high wear areas.



Features

- Thicknesses Available: 3/4", 1", 1 1/4", 1 1/2", 1 3/4" and 2"
- Shapes Available:
 - Any four sided flat dimensional shape
 - Dimensionally less than or equal to 4 sq.ft. per piece
 - Max length 48"

Products

- Chute Liners
- Side Liners
- Feed Lips
- Pan Liners
- Chute Liners
- Standard 1'x1'
- General frame protection

Urethane Application Guide	Type	Material	Dry/Wet	Ester/Ether
High Abrasion Resistance	Sliding, Cutting, Impact	Sand, Gravel, Coal, Ore	Dry/Wet	80A Ester
Abrasion Resistance	Sliding, Impact Abrasion	Fine Particles (Sand)	Wet	80A Ether
High Abrasion Resistance	Sliding, Cutting, Impact	Coal	Dry/Wet	80A Ester
Abrasion Resistance	Sliding, Impact Abrasion	Harder Duro, Low COF	Dry/Wet	90A Ether
High Abrasion Resistance	Sliding, Channeling, Impact	Harder Duro	Dry/Wet	90A Ester
Very High Abrasion Resistance	High Impact	Softer Duro/ High Deformation Resistance	Wet	80A Ester
Flame Retardant	Any	Any Durometer and composition	Dry/Wet	Any

buffalowire.com sales@buffalowire.com

Magnetic Liners

Quick, Safe and Easy Rotation

Standard Urethane Liner Application



Magnetic Liners

Quick, Safe and Easy Rotation

Standard Urethane Liner Application



Magnetic Liners

Quick, Safe and Easy Rotation

Custom Urethane Liner
Application



Magnetic Liners – Custom Kits



Magnetic Liners

Quick, Safe and Easy Rotation

Custom Urethane Liner Application
Trough



Magnetic Liners

Quick, Safe and Easy Rotation

Custom Urethane Liner Application
Chute



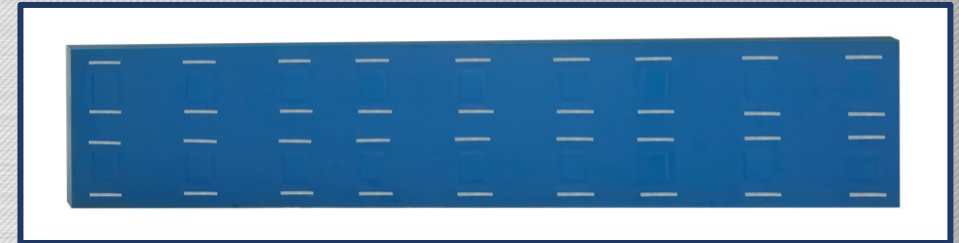
Magnetic Liners

Quick, Safe and Easy Rotation

Urethane Discharge Lips

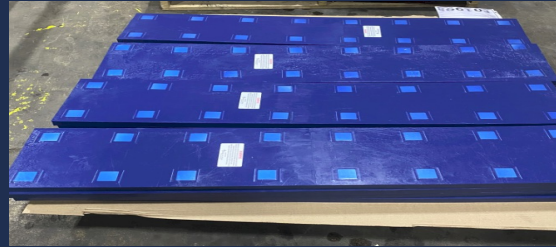


Magnetic Liners – Discharge Lips



Magnetic Liners

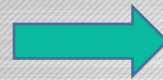
Quick, Safe and Easy Rotation



Urethane Side Liner
Wear Protection



Magnetic Liners – From 3 days of downtime to a 3 hour changeout and >2x wear life of AR plate.



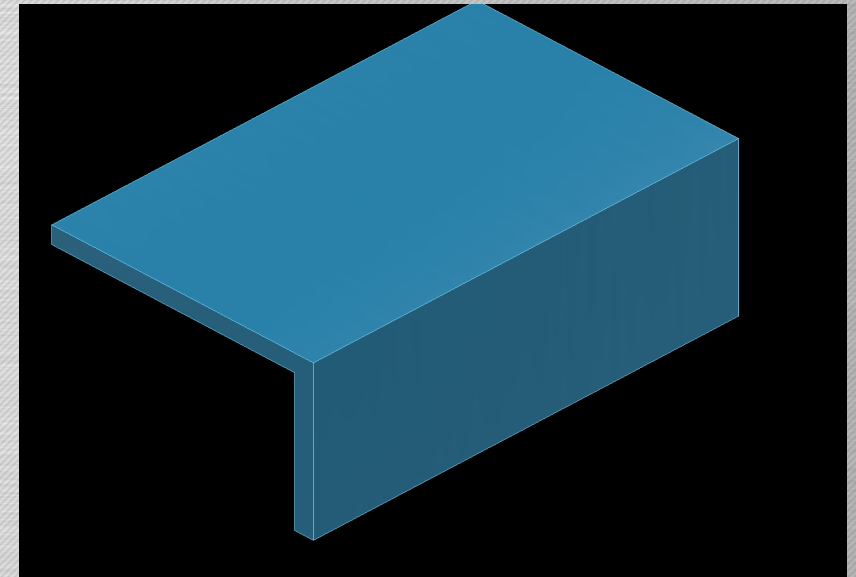
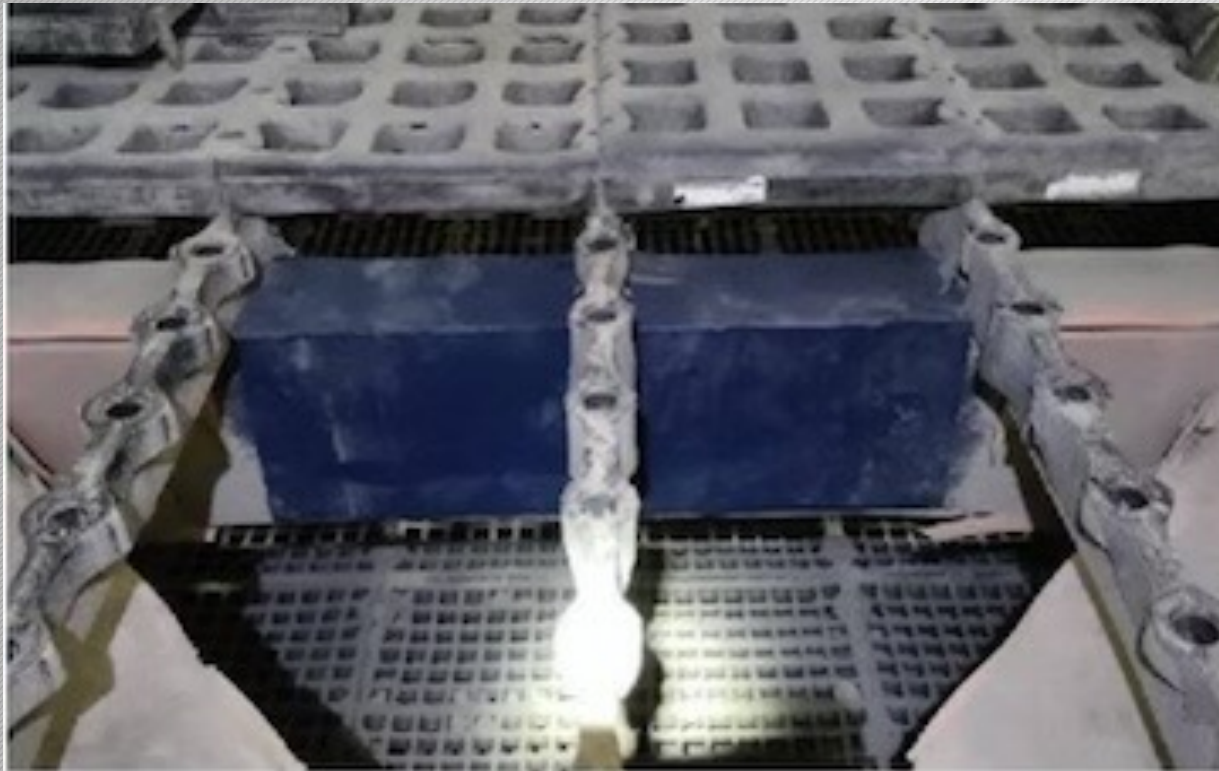
Magnetic Liners

Quick, Safe and Easy Rotation

Urethane Frame Protection



Magnetic Liners – Cross Member Protection



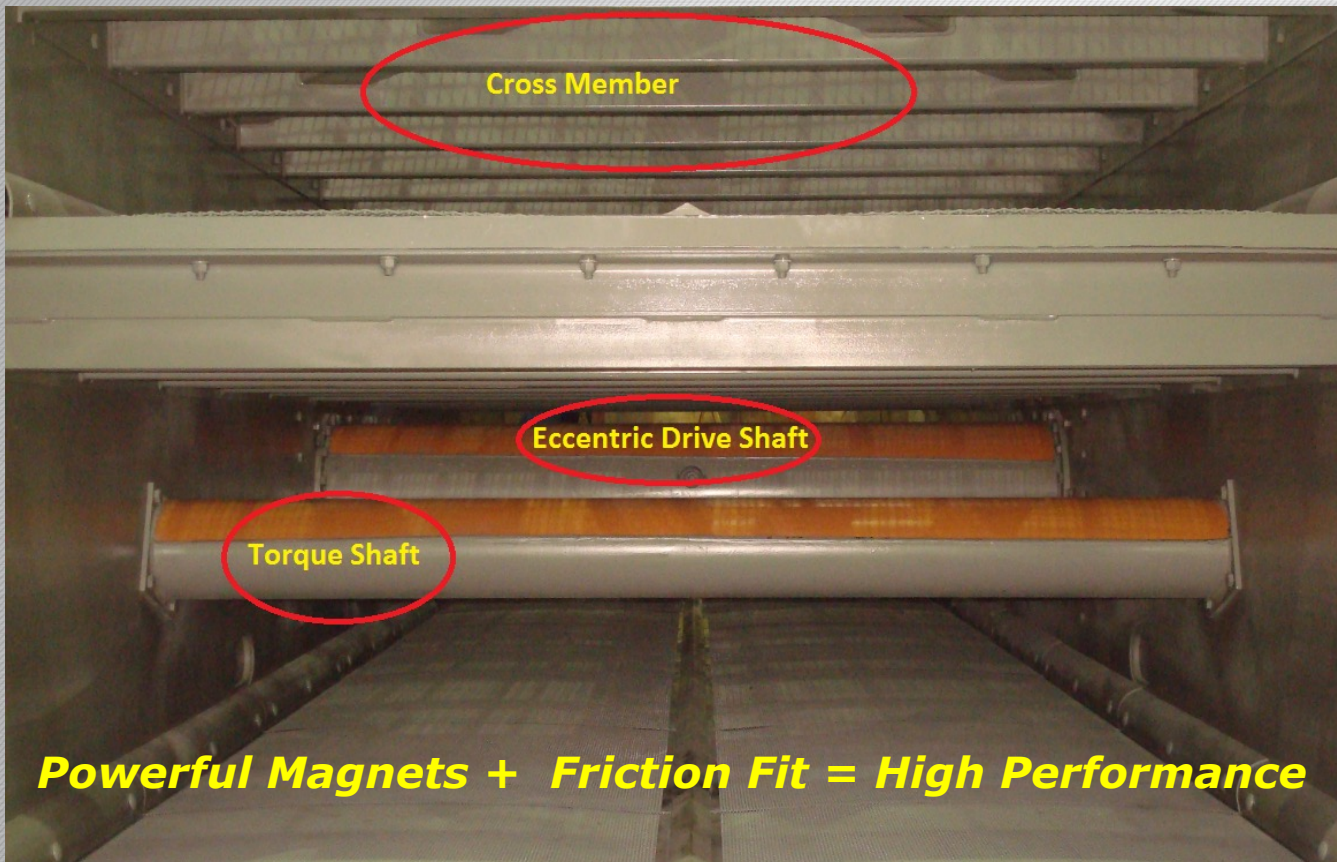
Magnetic Liners

Quick, Safe and Easy Rotation

Urethane Cross Tube Protection



Magnetic Liners – Cross Tubes (Unique Friction and Magnetic Design Fit)



Magnetic Liners

Quick, Safe and Easy Rotation

Spherical Urethane Cross Tube Application

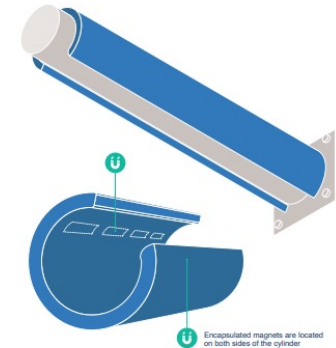


**Magnetic Urethane Liners
Cross Tubes / Members
Standard 4", 6" and 8" Diameter**

Magnetic Tube Liners

Serving all of your quarry needs and more

Buffalo Wire Works' magnetic tube liners install in seconds, snapping into place around cylindrical shapes. Their powerful magnets are uniquely encapsulated to make them completely rustproof. But don't let the simple install and easy maintenance fool you – these tough liners are in it for the long haul.



Encapsulated magnets are located on both sides of the cylinder

Features:

- Snap into place – no bolts, adhesives, welding, cutting, or retrofitting required
- 270-degree fit ensures great coverage, staying power, and additional friction "fit"
- Designed for cylindrical shapes
- Stock 4", 6", and 8" diameters are readily available. Standard length is 24" or less. Larger diameters available upon request.

Benefits:

- Innovative encapsulation design means the magnets snap on tight and never rust
- Install in seconds without bolts, adhesives, welding, cutting, or retrofitting
- Ideal for both static and vibratory applications
- Easy to rotate and maneuver between higher wear areas
- Get in and out fast! Easy to apply on hard-to-reach wear areas in confined or tight spaces

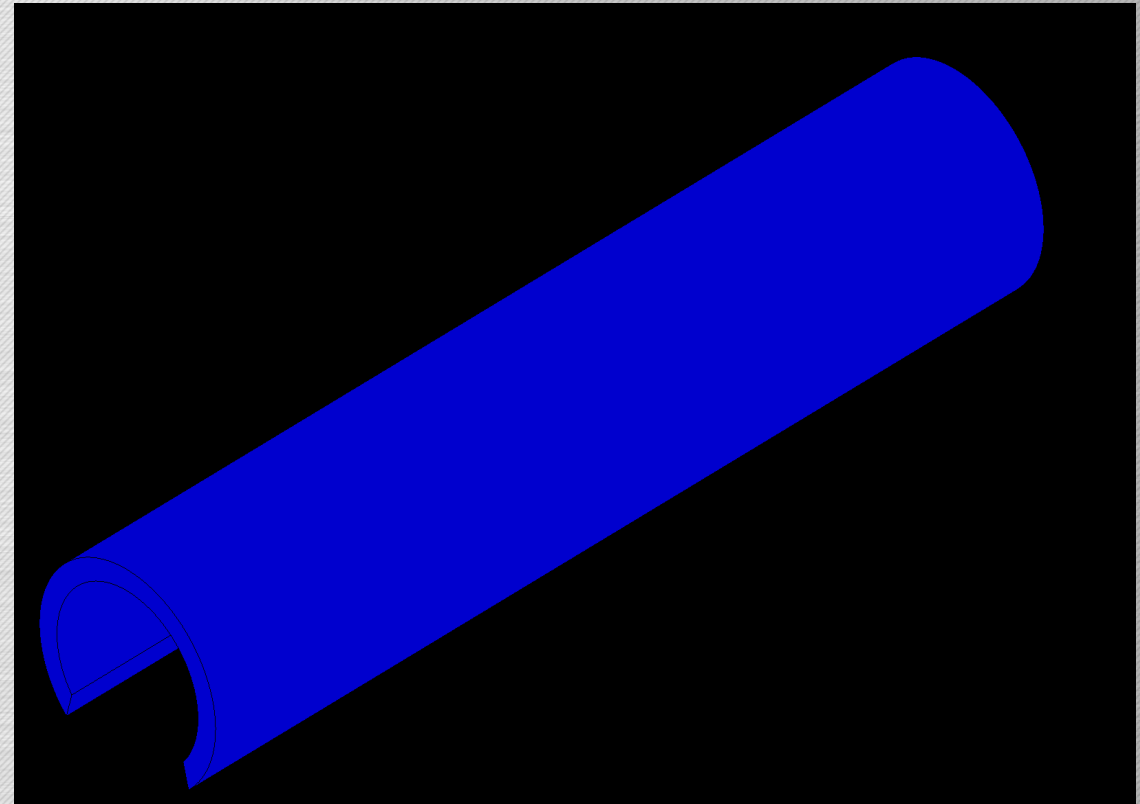
Magnetic Liners

Quick, Safe and Easy Rotation

Urethane Spray Bar Protection



Magnetic Liners – Spray Bars



"NEW" UHMW Magnetic Liners

Quick, Safe and Easy Rotation

**NEW UHMW Liner
Technology**



Hybrid Magnetic Liners - UHMW

- Slick Surface (Low COF)
- Wear Resistant
- Safe, Quick and Easy to Install
- Spend less time cleaning sticky surfaces in Equipment. Get In and Out Quickly



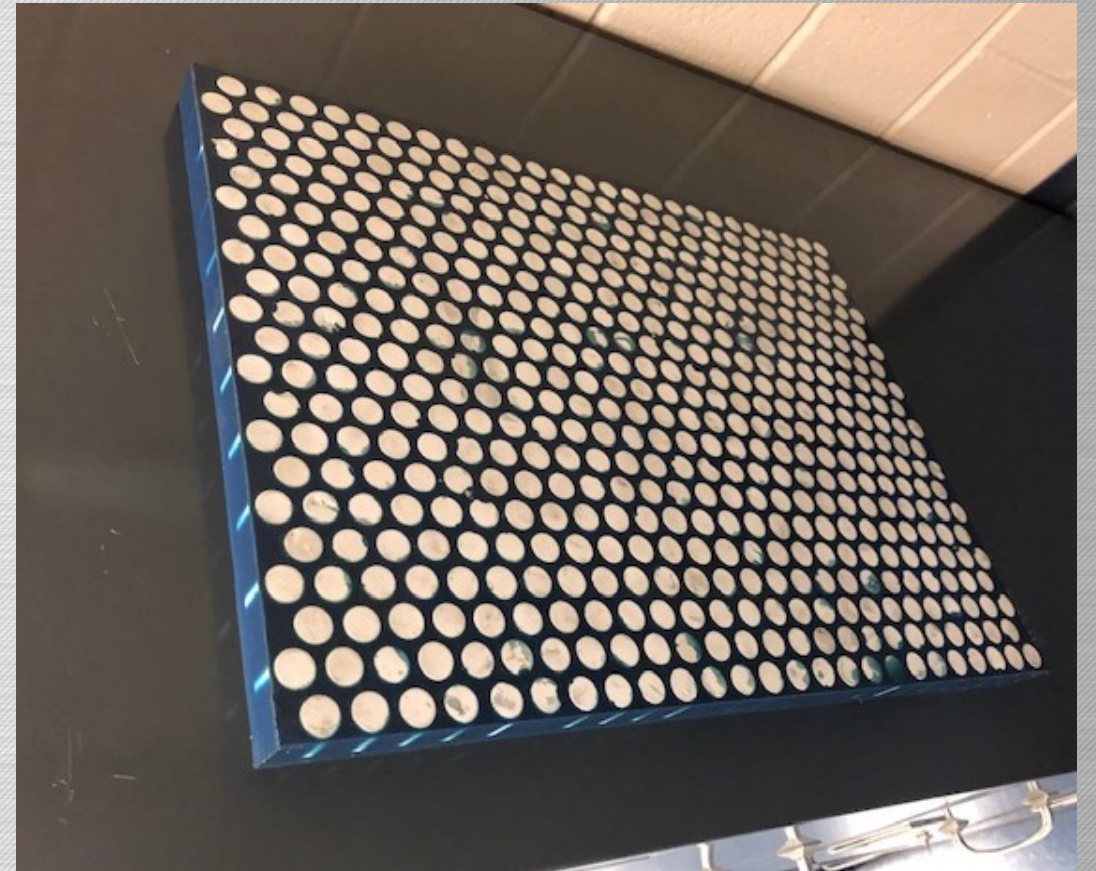
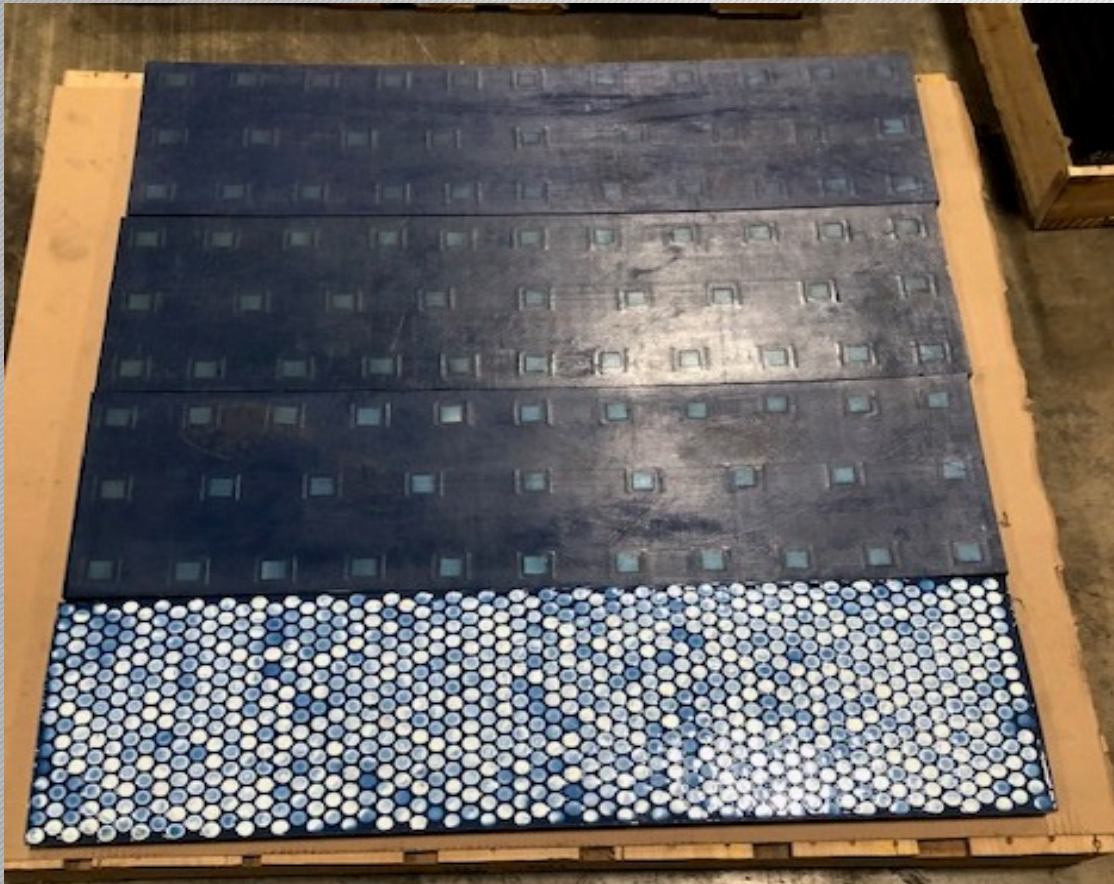
Magnetic Liners with Ceramics

Quick, Safe and Easy Rotation

Urethane w/Ceramics for
Harsh Abrasive Conditions



Urethane Magnetic Liners with Ceramics



Magnetic Liners

Quick, Safe and Easy Rotation

Rubber Magnetic Liners Design Coverings



Large Magnetic Rubber Tube Liners | Eccentric Shafts | Typically ≥ 10 " Diameter | 5 Coverage Designs



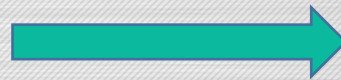
Magnetic Liners

Quick, Safe and Easy Rotation

Rubber Magnetic Liners
Application → Drop Chute



Rubber Magnetic Liners



Best Used at Ambient
Temperatures (Conservatively
up to 120 Degrees Fahrenheit)



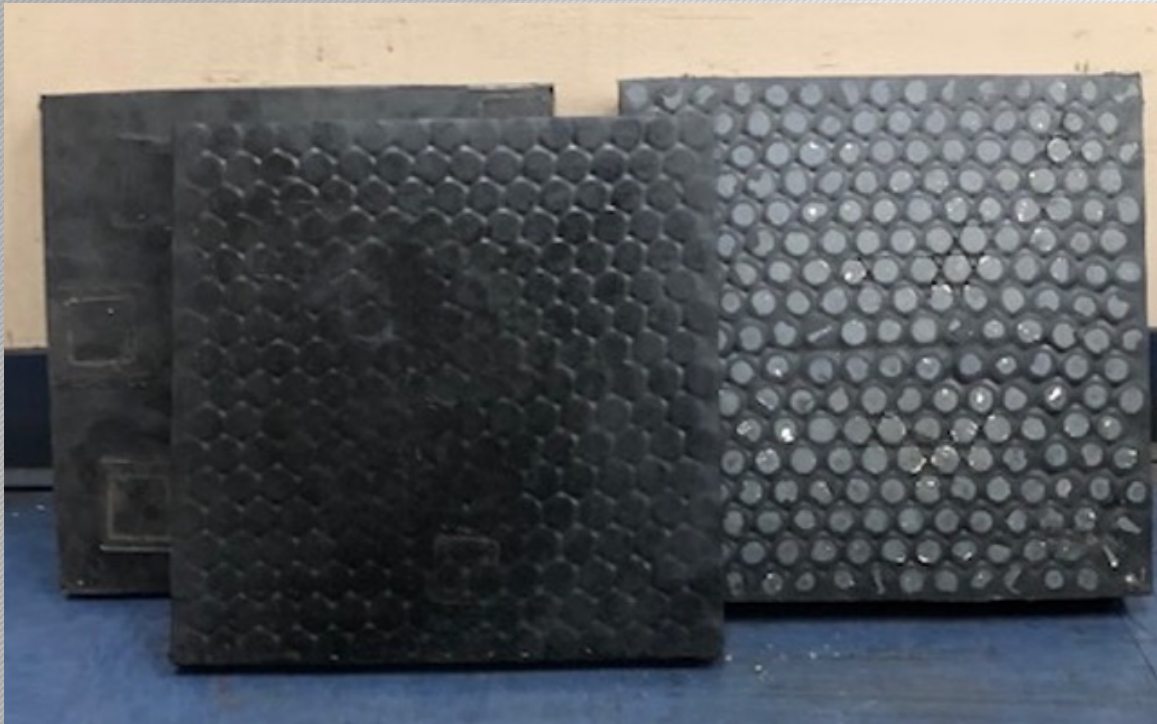
Magnetic Liners with Ceramics

Quick, Safe and Easy Rotation

Rubber w/Ceramics for
Harsh Abrasive Conditions



Rubber Magnetic Liners with Ceramics



Magnetic Liners
(Urethane, Rubber, UHMW)

#1 SAFETY

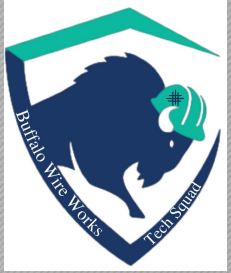


Think Safety and Minimizing Your Time
Inside Heavy Machinery

Consider Magnetic Liners for your
Operation Today

Buffalo, NY
Reno, NV
San Antonio, TX

Magnetic Liner Technology Safer and Smarter



Sept 15-18th, 2024



World Class Screening & Wear Products



Crushing | Sizing | Conveying

Presented by Lovell Bennett

